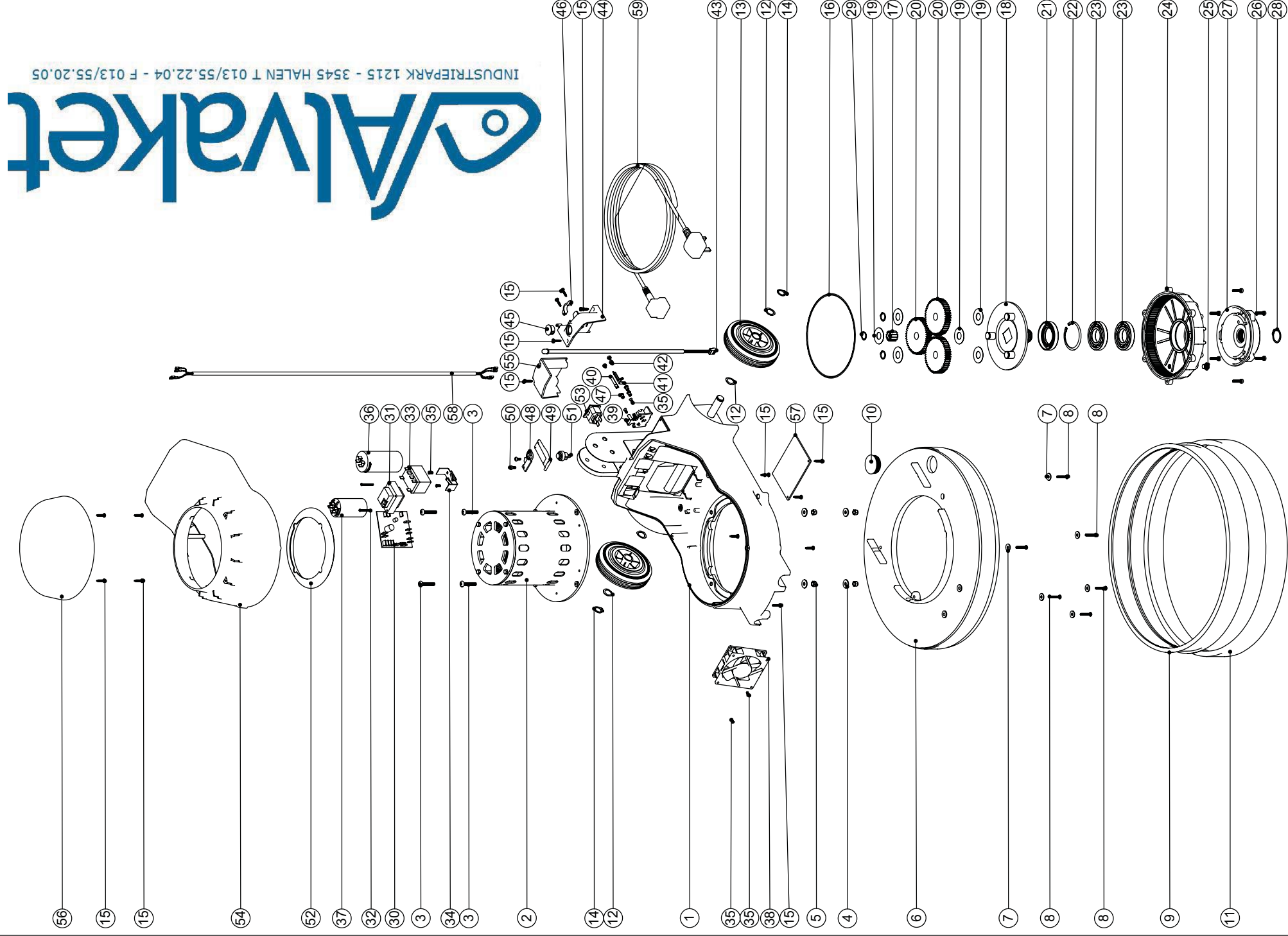


Numatic International Spare Parts
Model No: NS-1500S/30 BASE ASSEMBLY

234219
 DRAWING:EXP-0650 ISS:A01
 15/01/2004



Numatic International Spare Parts
Model No: NS-1500S/30 BASE ASSEMBLY

POS	ITEM NO	DESCRIPTION	COMMENTS
1	304000	GRAPHITE BASE MouldING SUB ASSEMBLY (PRINTED)	
2	205073	230V/50HZ MOTOR (M12 SHAFT)	
3	219268	M6 X 35MM LONG POZI PAN SCREW	
4	219008	M6 FORM G WASHER	
5	219088	M6 NYLON INSERT NUT	
6	329110	GREY SANDING DECK	
7	219005	M5 FORM G WASHER	
8	219389	No8 X 1 INCH LONG POZI PAN STAINLESS STEEL PLASTITE SCREW	
9	206475	GREY MEDIUM BUFFER EXTRUSION	
10	229400	BLACK END STOP	
11	227810	450MM DIAMETER COLLECTOR RING	
12	219219	21.5MM X 16.3MM WAVE WASHER	
13	229060	WHEEL GREY BLACK HUB	
14	229051	EXTERNAL CIRCLIP	
15	219107	No6 X 5/8 INCH LONG POZI PAN PLASTITE SCREW	
16	230001	V OIL SEAL	
17	230027	12 TOOTH PINION GEAR (STANDARD SPEED)	
18	230291	PLANET CARRIER & PIN ASSEMBLY (50HZ STANDARD SPEED)	
19	230215	35MM X 15 I/D ALUMINIUM WASHER	
20	230013	48 TOOTH SPUR GEAR(STANDARD SPEED 50/60HZ)	
21	230002	DOUBLE LIP OIL SEAL	
22	230200	62MM INTERNAL CIRCLIP	
23	230004	62 O/D X 30 I/D BEARING	
24	230060	BOTTOM PLATE WITH MACHINED GEAR TEETH	
25	219801	GEAR BOX OIL PLUG	
26	219820	M5 X 20MM LONG SOCKET CAP SCREW	
27	230059	DIE CAST CHUCK	
28	230048	26MM EXTERNAL CIRCLIP	
29	230015	15MM EXTERNAL CIRCLIP	
30	205120	230V CONTROL PCB	
31	206578	TRANSFORMER	
32	219800	M3 X 30MM LONG POZI PAN SCREW	
33	220898	12V DC RELAY (C/W BRACKET)	
34	206500	RELAY BRACKET	
35	219651	M4 X 10MM LONG POZI PAN THREAD CUTTING SCREW	
36	220968	MOTOR START CAPACITOR	
37	205077	450V/16 MFD MOTOR RUN CAPACITOR	
38	205072	PROCESSED 12V DC BRUSHLESS FAN	
39	216288	TERMINAL BLOCK	
40	206562	CONTACT PIN	
41	206563	EARTH CONTACT PIN	
42	219090	M4 X 8MM LONG POZI PAN SEMS SCREW	
43	205124	PLUG IN LED ASSEMBLY	
44	216289	VERTICAL PLUG INPUT COVER	
45	220967	LENS COVER	
46	216290	CABLE CLAMP	
47	219009	M4 BRASS TAPPEX INSERT	
48	216293	LEVER PLATE	
49	216292	CUT OUT LEVER	
50	219677	No4 X 10MM LONG POZI PAN PLASTITE SCREW	
51	229454	HANDLE SWITCH	
52	227556	TOP MOTOR GASKET	
53	220964	APPLIANCE OUTPUT SOCKET	
54	229441	FLOOR MACHINE MIDDLE SECTION MouldING	
55	216291	OUTPUT COVER	
56	328085	TOP SECTION MouldING (PRINTED)	
57	329228	GAURD PLATE	
58	220977	BASE LOOM ASSEMBLY	
59	220948	12.5M X 1.50MM X 3 CORE NUCABLE (UK PLUG)	
	220952	12.5M X 1.50MM X 3 CORE NUCABLE (EURO PLUG)	
	236023	10.0M X 1.50MM X 3 CORE CABLE (SOUTH AFRICAN PLUG)	
	220942	12.5M X 1.50MM X 3 CORE BLACK CABLE (AUSTRALIAN PLUG)	
	236019	10.0M X 1.50MM X 3 CORE NUCABLE (SWISS PLUG)	